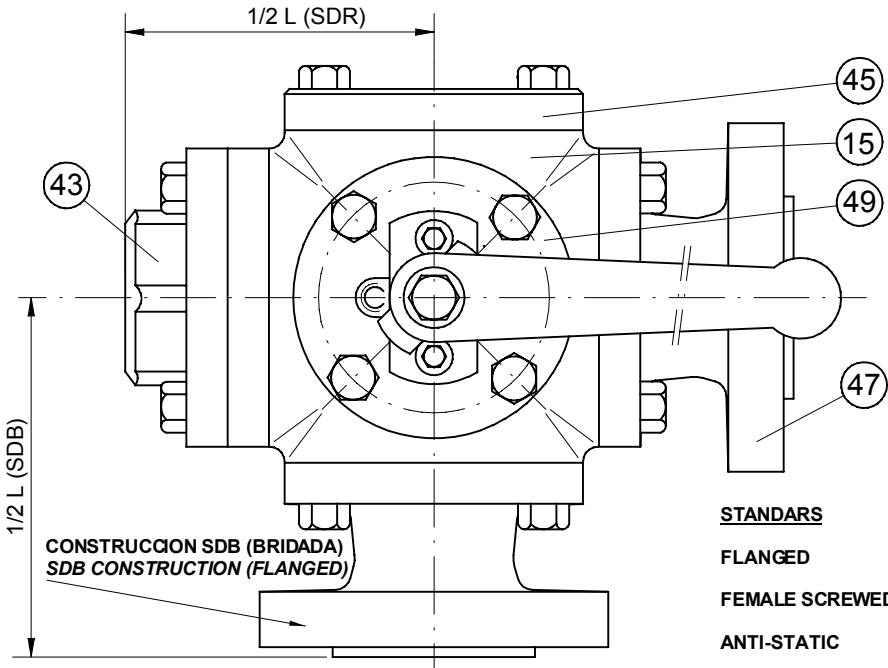


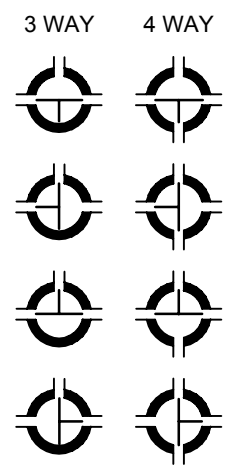
CONSTRUCCION SDR (ROSCADA)  
SDR CONSTRUCTION (SCREWED)



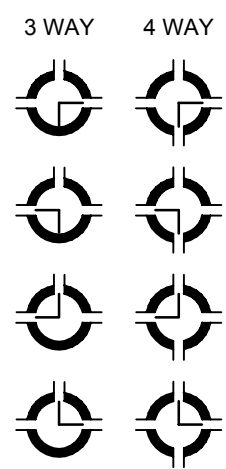
CONSTRUCCION SDB (BRIDADA)  
SDB CONSTRUCTION (FLANGED)

**STANDARS**  
**FLANGED**  
**FEMALE SCREWED ENDS**  
**ANTI-STATIC**

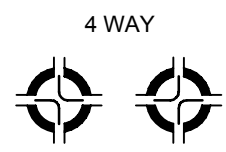
**T PORT**



**L PORT**



**X PORT**



DIN 2501 Part 1  
DIN 2526 Form D  
DIN 259 BSP  
ANSI B 1.20.1 NPT  
BS 5351

Size DN	15	20	25	32	40	50	65	80	100	125	150
D	13	18	23	30	40	50	65	80	100	125	150
L (SDB)	175	190	212.5	220.00	260	290	325	370	450	460	500
L (SDR)	120.5	130	142.5	171	190	218					
N	111.5	116	126	140	155	166.5	183.5	205.5	241.5	240.5	257.5
h	50	54.5	58	66	79	84	101	121	146.5	145.5	162.5
E	14	19	17	18	20	20					
M	200	200	240	240	290	550	550	550	550	700	
WEIGHT Kg. SDB	6.5	8.5	12.3	15.5	22.3	32.4	46	64	97	120	140
WEIGHT Kg. SDR	4	4.5	6.5	8.5	14	19					

POS.	DENOMINATION	QTY.	MAT. SS VERSION	MAT. CI VERSION
96	WASHER DIN 9021	1	SS 304 (1.4301)	
95	WRENCH	1	SS 304 (1.4301)	C. STEEL (PAINTED)
94	SPRING WASHER	2	SS 301	
93	WRENCH SUPPORT	1	NI GGG-40	
92	GLAND BOLT DIN 912	2	A2-70 DIN 267/11	C. STEEL 8.8 (ZINC PLATED)
91B	WRENCH BOLT DIN 933	1	A2-70 DIN 267/11	C. STEEL 8.8 (ZINC PLATED)
91	BODY CONNECTOR BOLT DIN 933		A4-70 DIN 267/11	C. STEEL 8.8
90	WRENCH TUB	1	CS ST.42 (ZINC PLATED)	
88	FRICION RING	1	PTFE VIRGIN	
87	FRICION WASHER	1	PTFE VIRGIN	
86	FRICION RING	1	PTFE VIRGIN	
85	STEM SEAL	1	PTFE VIRGIN	
74	BODY SEAL TOP	1	PTFE VIRGIN	
73	BODY SEAL END	4	PTFE VIRGIN	
65	SEATS	4	PTFE VIRGIN	
56	GLAND RING	1	SS 316 (1.4401)	
55	GLAND PLATE	1	SS 304 (1.4301)	C. STEEL (ZINC PLATED)
50	STOP PLATE	1	SS 304 (1.4301)	C. STEEL (ZINC PLATED)
49	TOP COVER	1	EN 10213-4 (1.4401)	GG25-0.6025
47	BODY END (SDB)		EN 10213-4 (1.4401)	GG25-0.6025
45	END FLANGE	1	EN 10213-4 (1.4401)	GG25-0.6025
43	BODY END (SDR)		EN 10213-4 (1.4401)	GG25-0.6025
30	STEM	1	SS 316 (1.4401)	SS 304 (1.4301)
25	BALL	1	EN 10213-4 (1.4401)	
15	BODY	1	EN 10213-4 (1.4401)	GG25-0.6025



Tapis, 126 - P.O. Box, 13 - 17600 FIGUERES (Girona) Spain  
Tel.: (34) 972 67 70 52 - Fax: (34) 972 50 90 40  
E-mail: technical@bacvalves.com web: www.bacvalves.com

Titulo / Title <b>PLANO GENERAL CON LISTA DE MATERIALES</b> <b>GENERAL DRAWING WITH MATERIAL LIST</b> <b>VÁLVULA DE BOLA / BALL VALVES</b> <b>TIPO / TYPE SDB, SDR</b>		Dibujado / Drawn <b>Enric Balsera</b>	Escala / Scale
		Aprobado / Approved <b>Esteve Bernal</b>	Fecha / Date <b>22-02-99</b>
		Plano nº / Drawing nr. <b>03-2801</b>	Rev. <b>B</b>

Prohibido el uso y reproducción de este plano parcial o totalmente, sin expresa autorización de BAC VALVES S.A.  
 Any partially or totally use or reproduction of this drawing, without specific authorization of BAC VALVES S.A. is forbidden.