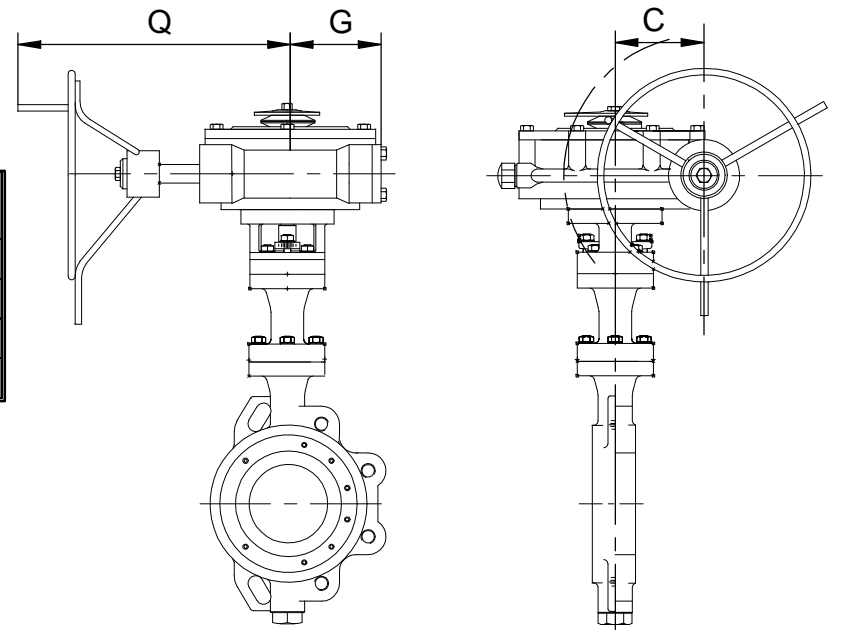
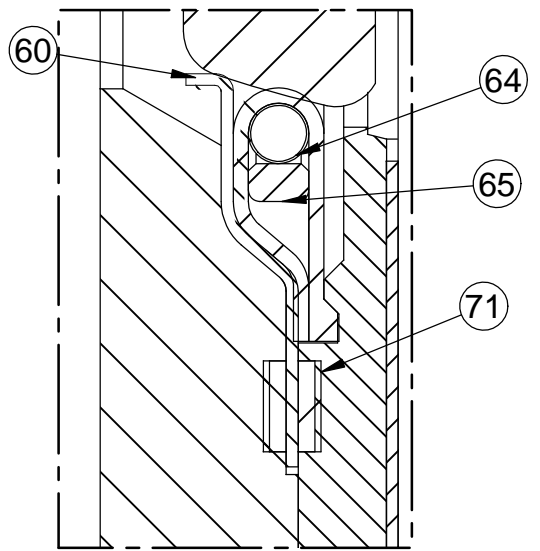


SECCION - SECTION A-A

| GEAR OPERATOR | SIZE DN | D | C | F | Q | G |
|---------------|--------------|-----|-----|----|-----|-----|
| RK-45 | 3" - 4" - 6" | 345 | 65 | 37 | 270 | 75 |
| RK-75 | 8" - 10" | 370 | 98 | 43 | 294 | 92 |
| RK-125 | 12" | 540 | 152 | 62 | 462 | 156 |
| RK-400 | 14" | 540 | 152 | 62 | 552 | 156 |



DETALLE - DETAIL B




Applicable Standards:
 End Flanges DIN
 Smooth Finish (Ra 3.2-6.3 μm)
 Face-to-Face API 609
 Body Pressure Temp. Rating ANSI B 16.34
 Seat Pressure Temp. Rating API 609
 Fire-safe Test Certification
 BS 6755 Part 2
 NACE Standart MR0175

| SIZE DN | m.m. | 80 | 100 | 150 | 200 | 250 | 300 | 350 |
|------------|------|------|------|-------|-------|----------|------|-------|
| | inch | 3" | 4" | 6" | 8" | 10" | 12" | 14" |
| D | m.m. | 74.6 | 86.7 | 144.1 | 193.8 | 235.8 | 286 | 304.5 |
| A PN 10-16 | m.m. | 50 | 55.5 | 60 | 67 | 72 | 84 | 92 |
| A PN 25-40 | m.m. | 50 | 55.5 | 60 | 76 | 86 | 94 | 117 |
| B PN 10 | m.m. | 134 | 158 | 212 | 265 | 320 | 370 | 430 |
| B PN 16 | m.m. | | | | | | 378 | 438 |
| B PN 25 | m.m. | | | | 278 | 335 | 395 | 450 |
| B PN 40 | m.m. | 138 | 162 | 218 | 285 | 345 | 410 | 465 |
| C | m.m. | 43 | 43 | 40 | 54 | 54 | 54 | 72 |
| E PN 10-16 | m.m. | 380 | 398 | 463 | 485 | 567 | 618 | 657 |
| E PN 25-40 | m.m. | 380 | 398 | 463 | 512 | 622 | 646 | 727 |
| F PN 10-16 | m.m. | 131 | 137 | 168 | 192 | 238 | 275 | 303 |
| F PN 25-40 | m.m. | 131 | 137 | 168 | 205 | 263 | 295 | 336 |
| G PN 10-16 | m.m. | 300 | | 400 | | GEAR BOX | | |
| G PN 25-40 | m.m. | 300 | | 400 | | GEAR BOX | | |
| K PN 10 | m.m. | | | 8 | | 12 | | 16 |
| K PN 16 | m.m. | 8 | | 12 | | 16 | | |
| K PN 25 | m.m. | | | 12 | | 16 | | |
| K PN 40 | m.m. | | | | | 12 | | 16 |
| L PN 10 | m.m. | M 16 | | M 20 | | M 20 | | |
| L PN 16 | m.m. | | | | | M 24 | | |
| L PN 25 | m.m. | M 16 | M 20 | M 24 | M 24 | M 27 | M 30 | |
| L PN 40 | m.m. | | | | M 27 | M 30 | M 33 | |
| M PN 10 | m.m. | | | 180 | 240 | 295 | 350 | 400 |
| M PN 16 | m.m. | 160 | | | | | 355 | 410 |
| M PN 25 | m.m. | | | 190 | 250 | 310 | 370 | 430 |
| M PN 40 | m.m. | | | | | 320 | 385 | 450 |
| WEIGHT | | | | | | | | |
| PN 10 | Kg | | | 26 | 33,7 | 53 | 80 | 114 |
| PN 16 | Kg | 11,8 | 14,3 | 26 | 41,5 | 83 | 108 | 189 |
| PN 25 | Kg | | | 35 | 39 | 62,3 | 102 | 134 |
| PN 40 | Kg | 14,6 | 17,5 | 35 | 55,5 | 102 | 141 | 228 |

| POS. | ITEMS DESCRIPTION | MATERIALS |
|-------|----------------------|---------------------------------------------|
| 10-11 | BODY | CAST SS ASTM A-351 CF8M / CS ASTM A-216 WCC |
| 19 | STOOL | CAST SS ASTM A-351 CF8M / CS ASTM A-216 WCC |
| 20 | DISC | CAST SS ASTM A-351 CF8M |
| 34 | SHAFT | BAR ASTM A-564M 630 |
| 35 | DISC KEY | BAR ASTM A-276 316 |
| 37 | PLUG | BAR ASTM A-276 316 |
| 38 | TOP SHAFT BEARING | SS/P.T.F.E./GRAPHITE/MP6 |
| 39 | BOTTOM SHAFT BEARING | SS/P.T.F.E./GRAPHITE/MP6 |
| 41 | SEAT RING CARRIER | CAST SS ASTM A-351 CF8M / CS ASTM A-216 WCC |
| 55 | GLAND FLANGE | CAST SS ASTM A-351 CF8 |
| 56 | GLAND FOLLOWER | BAR ASTM A-276 316 |
| 57 | BOTTOM BEARING RING | BAR ASTM A-276 316 |
| 58 | TOP BEARING RING | BAR ASTM A-276 316 |
| 59 | RING GUIDE | BAR ASTM A-276 316 |
| 60 | METAL SEAT | INCONEL-625 |
| 61 | P.T.F.E. SEAT | P.T.F.E. MOD. |
| 64 | ELGILOY SPRING | ELGILOY |
| 65 | SELF CENTERING RING | BAR ASTM A-276 316 |

| POS. | ITEMS DESCRIPTION | MATERIALS |
|------|-----------------------------|----------------------------------|
| 71 | SEAT GASKETS | GRAPHITE |
| 79 | EXTENDED SEAL | GRAPHITE |
| 80 | PLUG GASKET | GRAPHITE |
| 81 | GLAND PACKING | GRAPHITE |
| 84 | NAMEPLATE | ASTM A-276 316 |
| 85 | PLUG THRUST WASHER | P.T.F.E. |
| 89 | GLAND FOLLOWER SLEEVE | P.T.F.E. |
| 90 | ACTUATOR KEY | A4 (SS 316) |
| 92 | SEAT RING CARRIER FASTENERS | CAPSCREWS SS DIN 912 A4 (SS 316) |
| 93 | WRENCH | NODULAR IRON GGG-41 |
| 94 | LEVER SPRING | STAINLESS STEEL 302 |
| 95 | LEVER | NODULAR IRON GGG-41 |
| 96 | WASHERS | SS DIN 125 A2 (SS 304) |
| 97 | GLAND STUD BOLTS | SS DIN 976 A2 70 (SS 304) |
| 97A | STOOL STUD BOLTS | SS DIN 976 A2 70 (SS 304) |
| 98 | CUP-POINT-SETScrew | DIN 913 A2-70 (SS 304) |
| 99 | WRENCH STUD NUTS | CS SERIE KM ZINC PLATED |
| 99A | GLAND STUD NUTS | SS DIN 934 A2 (SS 304) |



BAC VALVES

Tapis, 126 - P.O. Box, 13 - 17600 FIGUERES (Girona) Spain
Tel.: (34) 972 67 70 52 - Fax: (34) 972 50 90 40
E-mail: technical@bacvalves.com web: www.bacvalves.com

| | | |
|----------------------------------------------------------------------------------------------------------------------------------------------------------------------------------------------------------|--------------------------------------------------------|-----------------------------------|
| Titulo / Title PLANO GENERAL CON LISTA DE MATERIALES GENERAL DRAWING WITH MATERIAL LIST VÁLVULA DE MARIPOSA / BUTTERFLY VALVES TIPO / TYPE WAFER & LUGGED SOFT SEAT PN-10-16-25-40 | Dibujado / Drawn Eduard Turon | Escala / Scale 1:4 |
| | Aprobado / Approved Jordi Font | Fecha / Date 31-01-2008 |
| | Plano nº / Drawing nr. HPBFV WR_LD DIN REV.1 | Rev. 1 |

Prohibido el uso y reproducción de este plano parcial o totalmente, sin expresa autorización de BAC VALVES S.A.
 Any partially or totally use or reproduction of this drawing, without specific authorization of BAC VALVES S.A. is forbidden