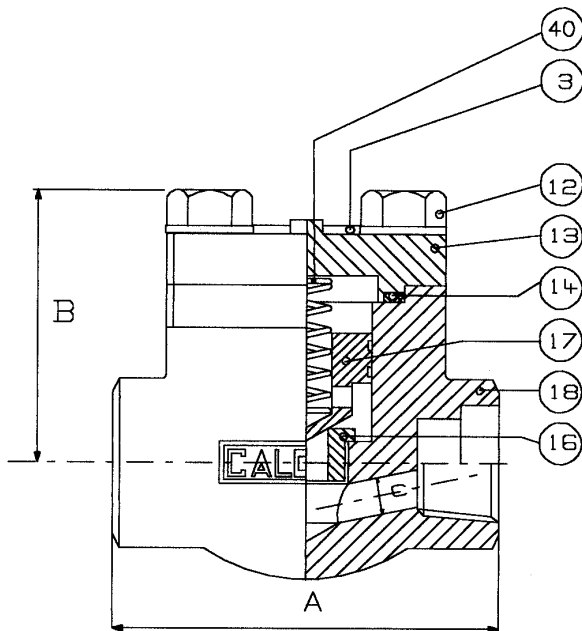


VALVE DATA SHEET

FLOW CONTROL COMPANY LTD

 ORDER POR00016
 ITEM : 5.00 ÷ 5.10

CALOBRI FIG.:	P8 A105-F6-HFS
PISTON CHECK VALVE S.800 SQUARE BOLTED BONNET REDUCED BORE SOCKET WELD OR THREADED NPT	



LIST OF COMPONENT / MATERIAL SPECIFICATION

No.	Component	Material Specification
003	NAMEPLATE	ALLUMINIUM
012	BOLTS	ASTM A193 B7
013	BONNET	ASTM A105
014	GASKET	316+GRAPHITE SPIRAL WOUND
016	SEAT	ASTM A276 TYPE 410 + STELLITE GR.6
017	PISTON	ASTM A276 TYPE 410
018	BODY	ASTM A105
040	SPRING	S.S. AISI 302

DIMENSION AND WEIGHT

REDUCED BORE		A	B	C	Weight Kg.
Dn	Fig.n°	End to end	Centre to open	Bore Diam.	
-	P8	80	55	9	1.3
15		90	60	13	1.4
20		110	75	18	2.4
25		127	80	23	4
32		155	100	30	7.4
40		170	120	35	8
50		-	-	-	-